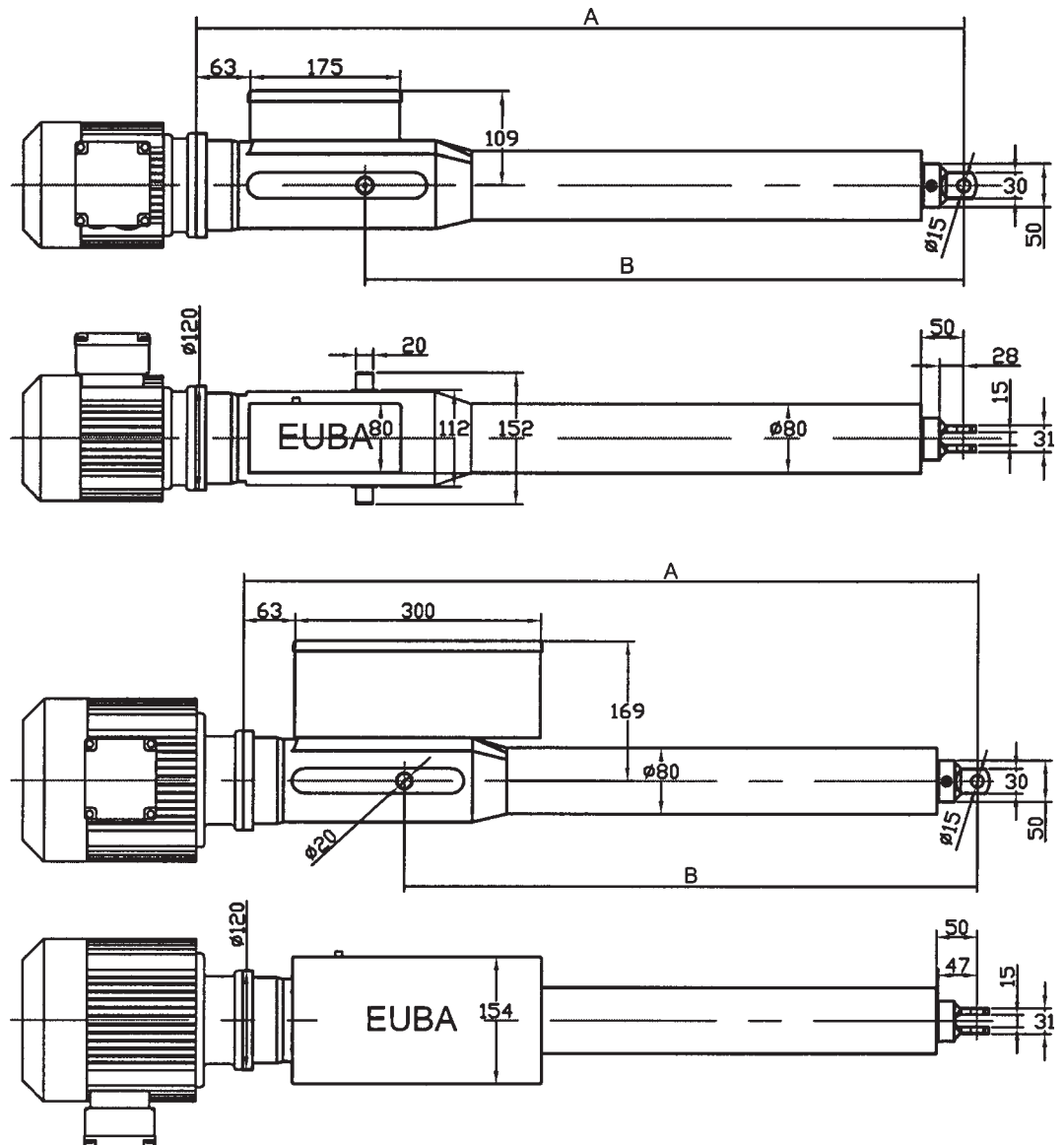


Type A4:



Mounting dimension actuator in mm													
stroke	0	50	100	150	200	250	300	350	400	450	500	550	600
A-size	397	447	497	547	597	647	697	747	797	847	897	947	997
B-size	206	256	306	356	406	456	506	576	626	676	726	776	826

Actuator dimensions can vary, especially the motor dimensions due to different brands.

B-size changeable

Motor dimensions depending on motor type and supplier

Power chart - Maximum force F [kN] related to stroke [mm]

Force F [kN]	1	2	3	4	5
Stroke s [mm]	600	600	550	500	450

Forces in between min. and max. can be realised continuously.

Standard design:

- Pivot
- Clevis

Special design:

- Brackets
- Foot mounting
- Cardan joint
- Special fixing
- Swivel head
- Angle ball -
- High temperature range up to +80°C
- Low temperature range down to -40°C
- Protection class up to IP-65
- ball screw spindle (KGT)

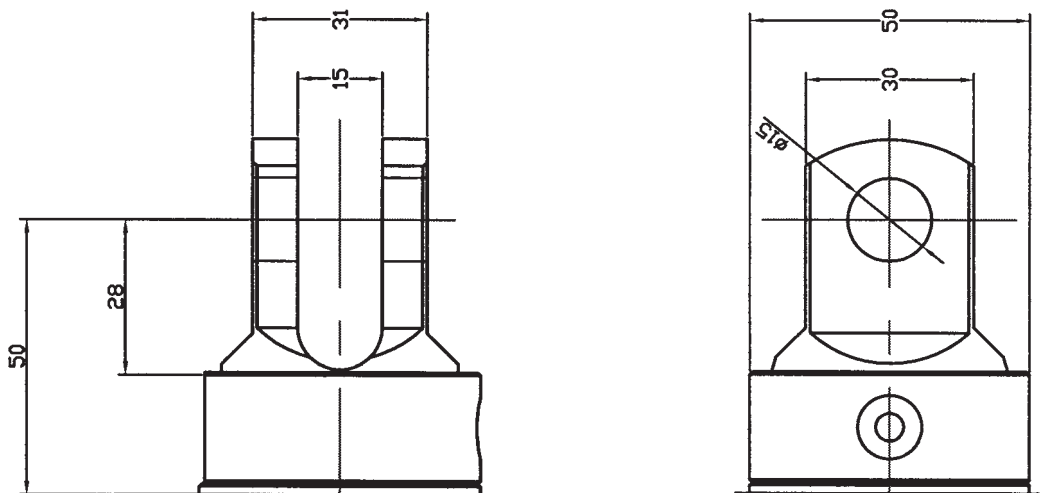
Actuator:

- Steel, with overload switches
- Acme screw thread spindle
- Spindle bearing system (overload protection unit), on both sides supported by spring piles
- Chrome plated push rod with internal torsion protection and scraper
- Temperature range from -10°C to +40°C

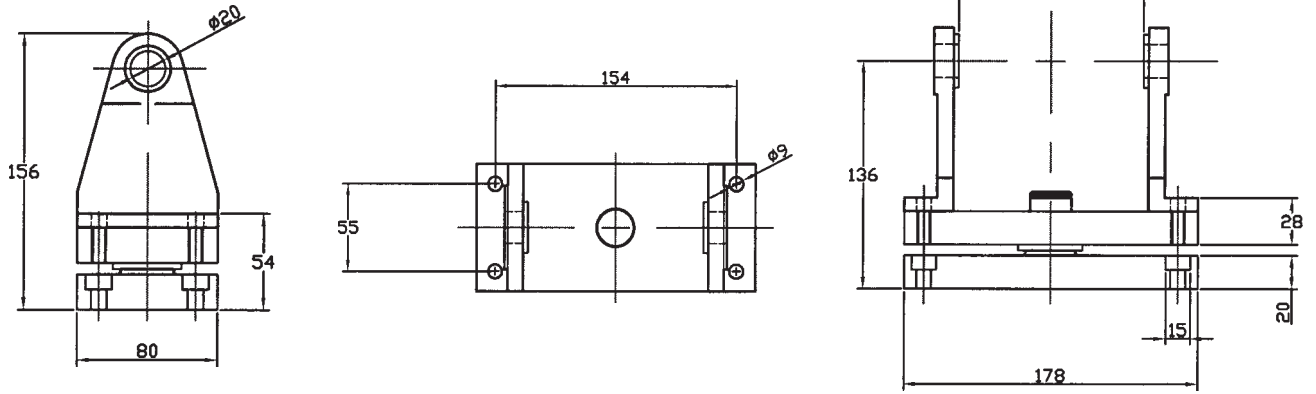
Motor:

Attachment of DIN IEC flange- and gear motors (manufacturer independent)

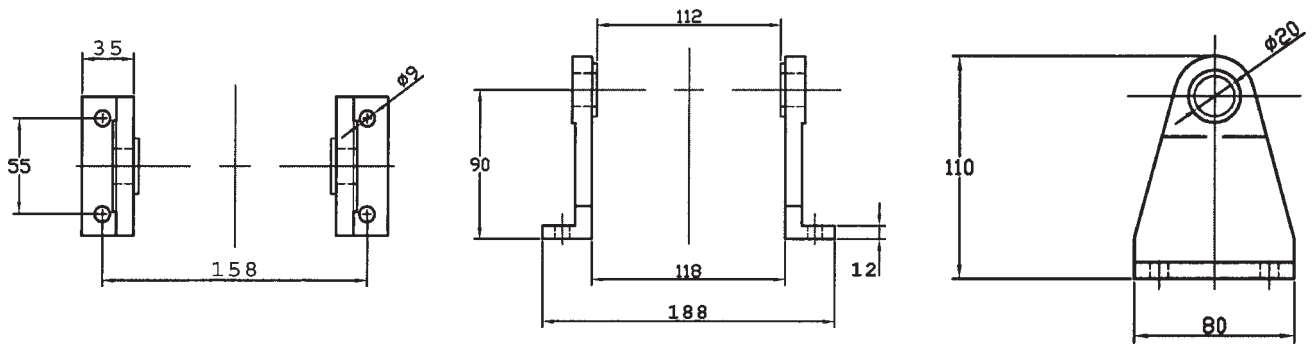
Clevis:



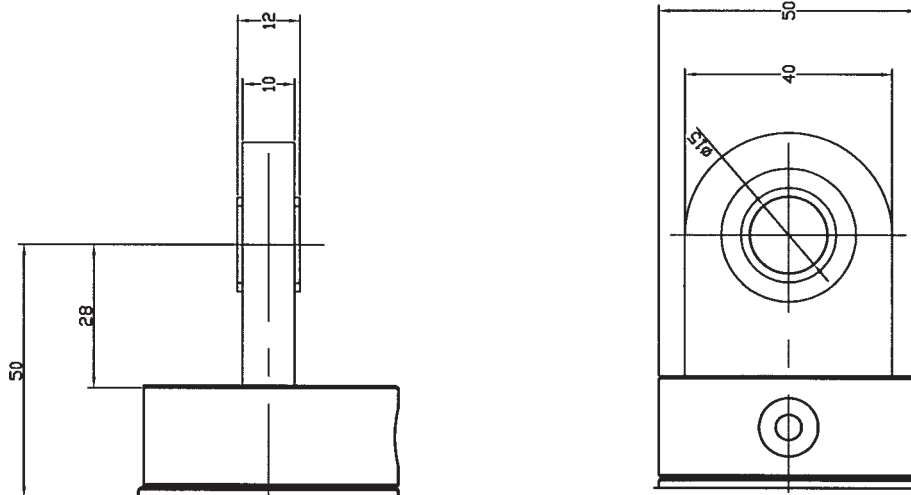
Cardan joint:



Brackets for pivot:



Swivel head:



Please use the inquiry form for detailed technical specification.
Minor changes in dimensions are possible due to production tolerances.