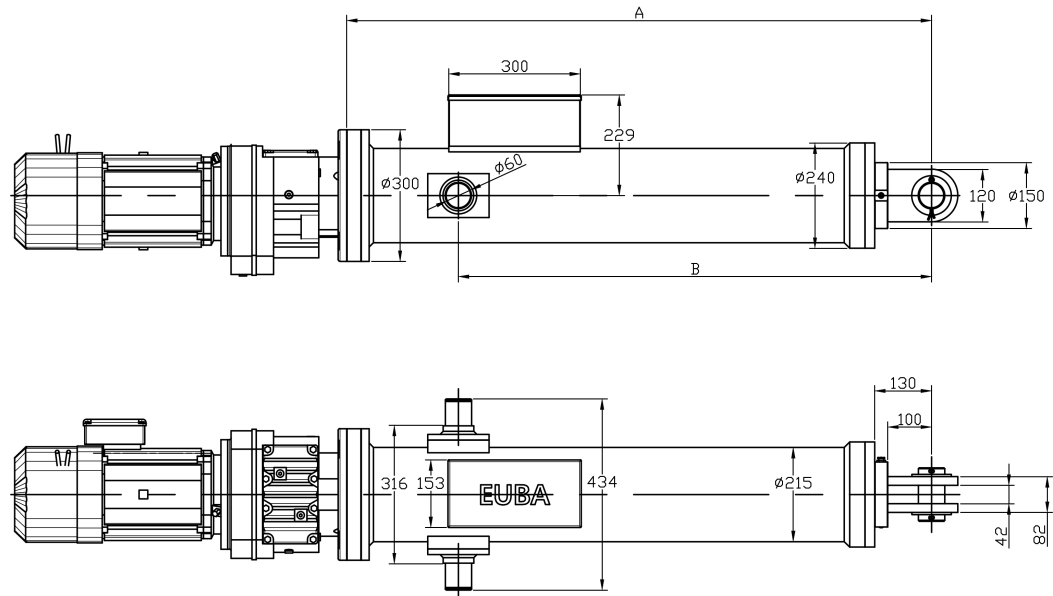


Type D4:



Mounting dimension actuator in mm																
stroke	0	50	100	150	200	250	300	350	400	450	500	550	600	650	700	750
A-size	835	885	935	985	1035	1085	1135	1185	1235	1285	1335	1385	1435	1485	1535	1585
B-size	580	630	680	730	780	830	880	930	980	1030	1080	1130	1180	1230	1280	1330
stroke	800	850	900	950	1000	1100	1200	1300	1400	1500	1600	1700	1800	1900	2000	
A-size	1635	1685	1735	1785	1835	1935	2035	2135	2235	2335	2435	2535	2635	2735	2835	
B-size	1380	1430	1480	1530	1580	1680	1780	1880	1980	2080	2180	2280	2380	2480	2580	

Actuator dimensions can vary, especially the motor dimensions due to different brands.

B-size changeable

Motor dimensions depending on motor type and supplier

Power chart - Maximum force F [kN] related to stroke [mm]

Force F [kN]	50	60	70	80	90	100	110	120	130	140	150
Stroke s [mm]	4000	4000	3800	3600	3400	3200	3100	2950	2850	2750	2650

Forces in between min. and max. can be realised continuously.

Standard design:

- Pivot
- Clevis

Special design:

- Brackets
- Foot mounting
- Cardan joint
- Special fixing
- Swivel head
- Angle ball - High temperature range up to +80°C
- Low temperature range down to -40°C
- Protection class up to IP-65
- ball screw spindle (KGT)

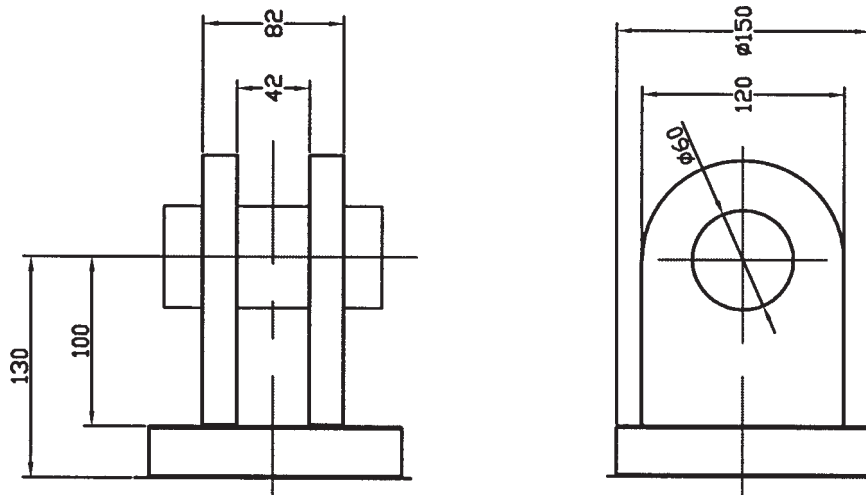
Actuator:

- Steel, with overload switches
- Acme screw thread spindle
- Spindle bearing system (overload protection unit), on both sides supported by spring piles
- Chrome plated push rod with internal torsion protection and scraper
- Temperature range from -10°C to +40°C

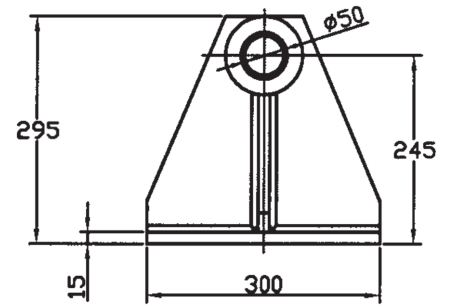
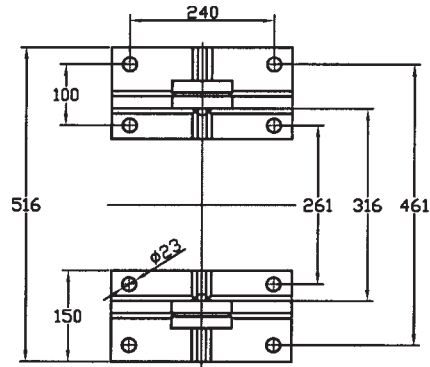
Motor:

Attachment of DIN IEC flange- and gear motors (manufacturer independent)

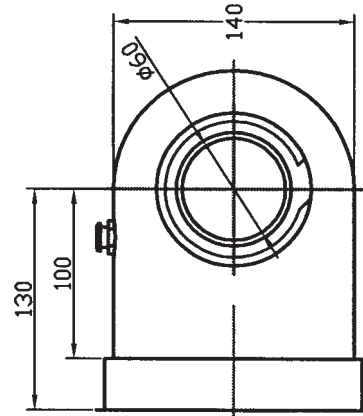
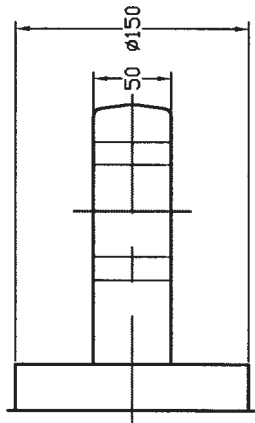
Clevis:



Brackets for pivot:



Swivel head:



Please use the inquiry form for detailed technical specification.
Minor changes in dimensions are possible due to production tolerances.